

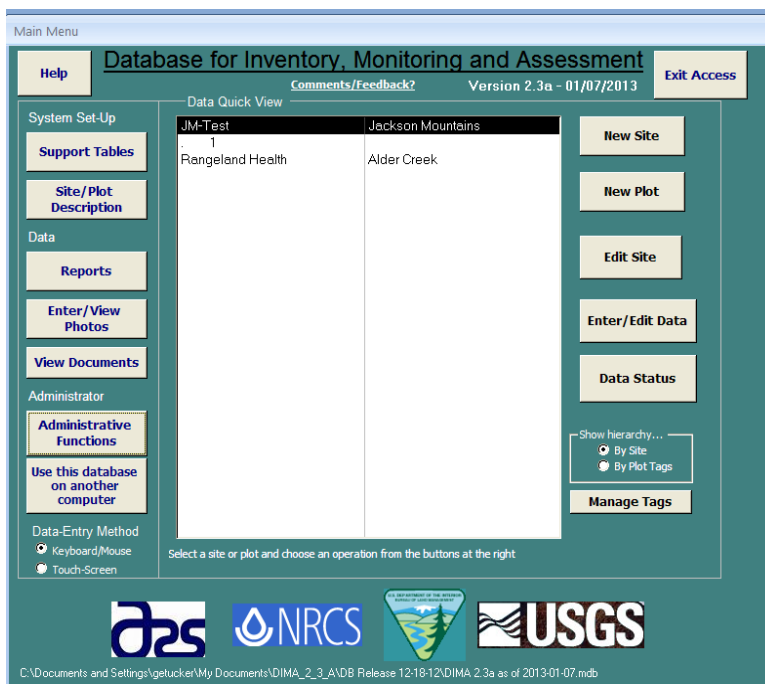
# Importing Data from another Database (Updates)

## Contents

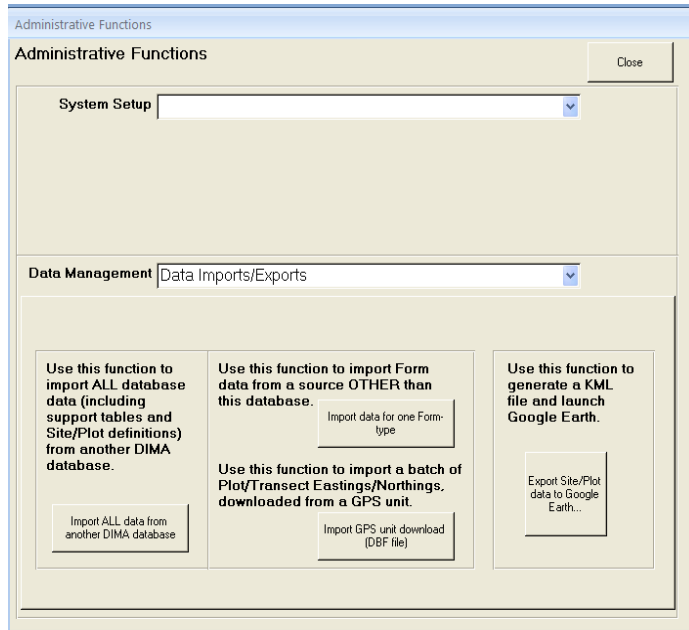
Instructions .....	5
Up Next .....	6
Contacts .....	6

You may need to move data from one database to another, either to create a subset of data or when a new version of DIMA is published.

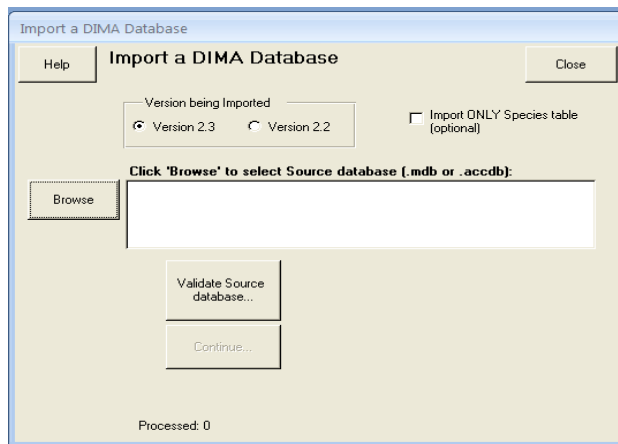
1. Click the **Administrative Functions** button on the DIMA homepage.



2. Choose **Data Imports/Exports** from the Data Management drop-down menu, and then click **Import ALL Data from Another DIMA Database**

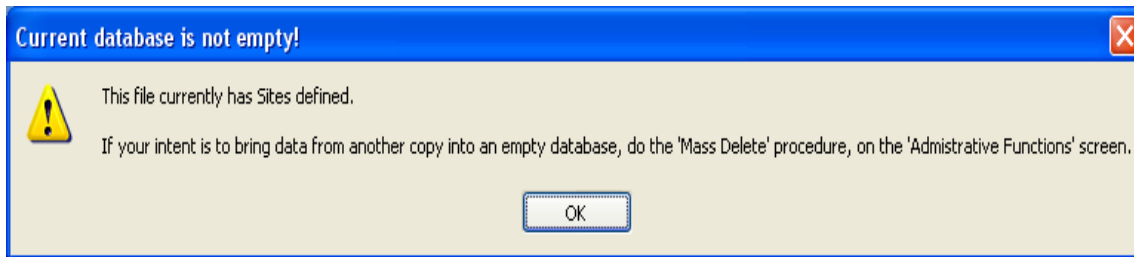


3. Choose the correct Version Being Imported and the click **Browse**

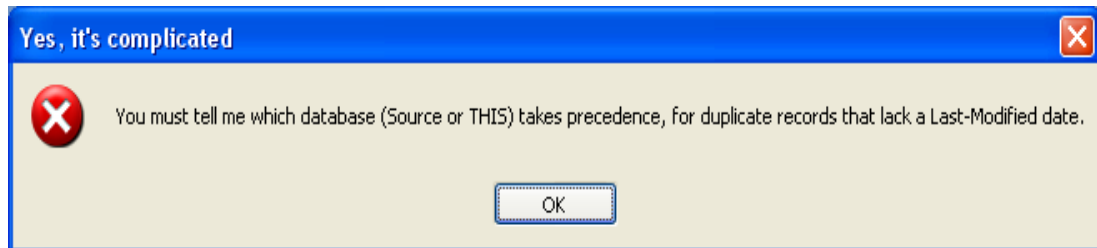


4. Find the appropriate file and click **Open**

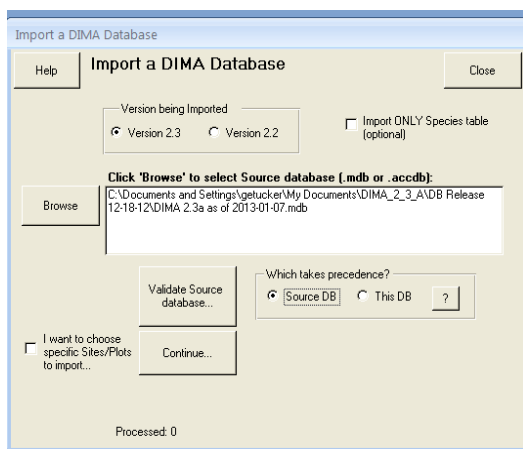
5. Click **Validate Source Database**. A text box will appear that reads 'The file currently has sites identified.' Click **OK**.



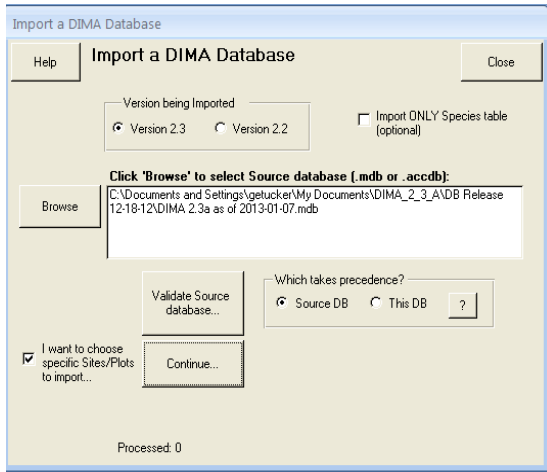
6. Another text box will appear that reads 'You must tell me which database (Source or THIS) takes precedence'. Click **OK**



7. Choose 'Source' or 'This DB' and then click **Continue**

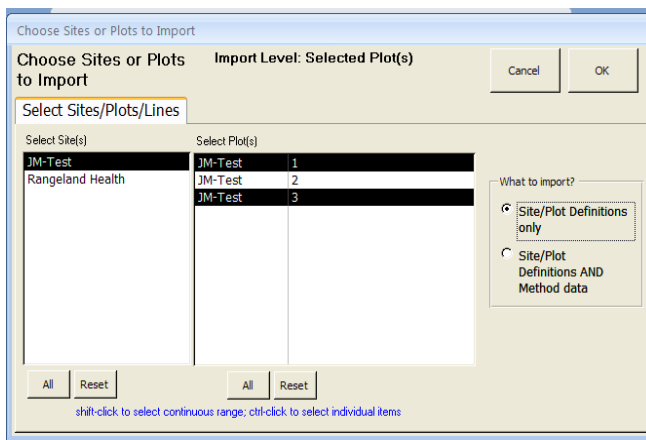


8. To only import selected sites, check **I want to choose specific Sites/Plots to import** and then click **Continue**

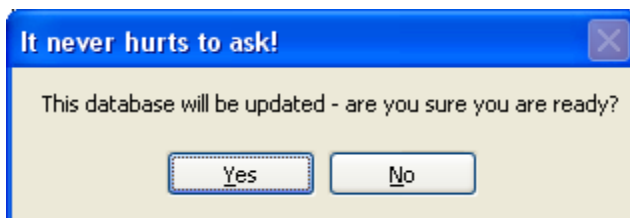


9. Select which Sites/Plots to import

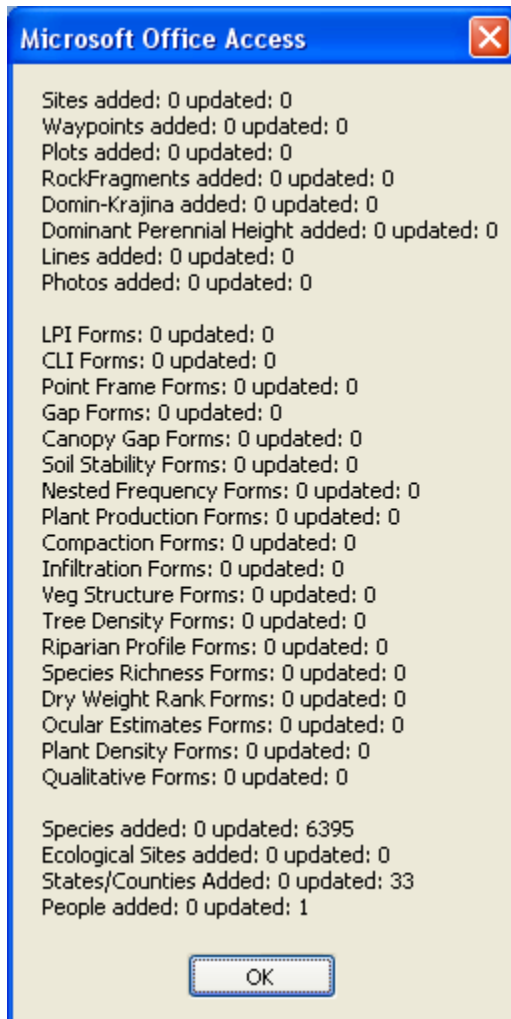
10. To only import Site/Plot definitions without monitoring data, choose **Site/Plot Definitions Only** and then click **OK**.



11. If you are ready to import, click **YES**.



12. Verify that the correct amount of information was updated and then click **OK**.



## References

Herrick, J. E., J. W. Van Zee, K. M. Havstad, L. M. Burkett, and W. G. Whitford. 2009. Monitoring manual for grassland, shrubland, and savanna ecosystems. USDA-ARS Jornada Experimental Range, Las Cruces, New Mexico.

Pellant, M., P. Shaver, D. A. Pyke, and J. E. Herrick. 2005. Interpreting indicators of rangeland health, version 4. BLM/WO/ST-00/001+1734/REV05, U.S. Department of the Interior, Bureau of Land Management, National Science and Technology Center, Denver, CO.

## Up Next

1. Merging Databases
2. Trouble Shooting DIMA
3. Load Excel spreadsheets to DIMA
4. AIM Data Reporting
5. Create a shapefile from DIMA

## Contacts

Sarah McCord at the Jornada Experimental Range ([smccord@nmsu.edu](mailto:smccord@nmsu.edu))

Emily Kachergis at the National Operations Center ([ekachergis@blm.gov](mailto:ekachergis@blm.gov))